



WWW.BARRYIND.COM

RXXXX-50-5E



BeO

FLANGED RESISTOR

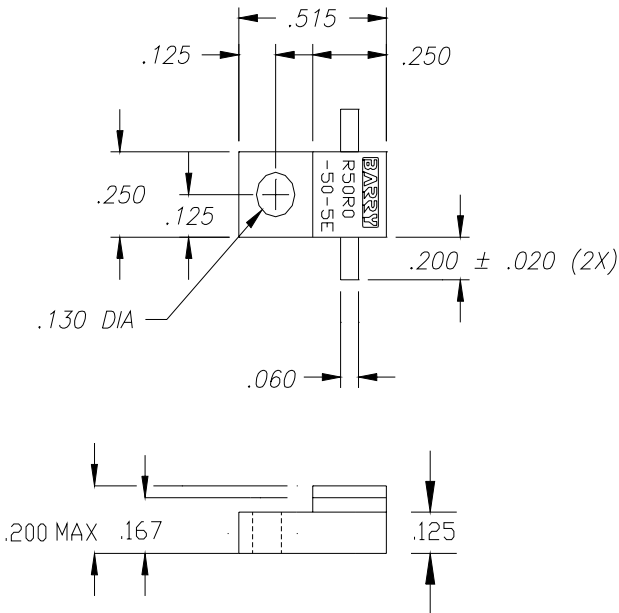
Features:

- ◆ BeO material
- ◆ 50 Watt input power
- ◆ Flange mounted

General Description:

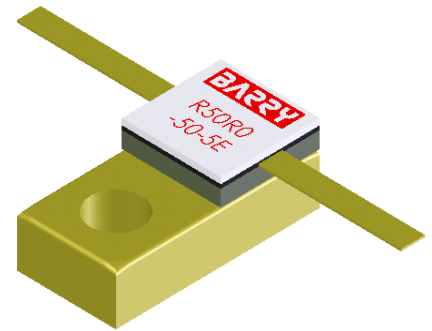
The RXXXX*-50-5E is a leaded resistor mounted onto a flange. It offers an input power of 50 Watts max while maintaining a flange temperature of 100°C.

See below for ordering options



Dimensions in inches
Tolerance ± .010
unless otherwise stated

Images shown are 50 Ohm devices



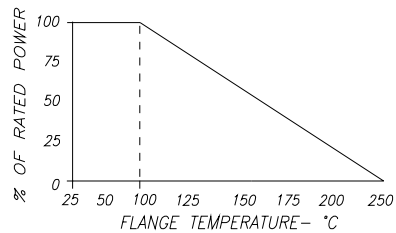
- *
XXXXX
Ohms
- 0.5 R 500
 - 1 1R 00
 - 10 10R 0
 - 50 50R 0
 - 100 ... 1000
 - 150 ... 1500
 - 1K 1001

Example part numbers:

R1000-50-5E = 100 Ohms

R50R0-50-5E = 50 Ohms

DERATING CURVE:



Parameter	Min.	Typ.	Max.	Units
Input Power			50	Watts
Resistance		+/- 5%		Ohms
Flange Temperature			100	°C

* Barry Industries reserves the right to change part number and or process without notification

Barry Industries, Inc., 60 Walton St., Attleboro, MA 02703 T: 508-226-3350 F: 508-226-3317 E-mail: sales@barryind.com

Barry Industries maintains an ISO 9001 Certified Quality Management System

Origination Date	Revision Date	Rev.
07/18/07	10/04/07	A