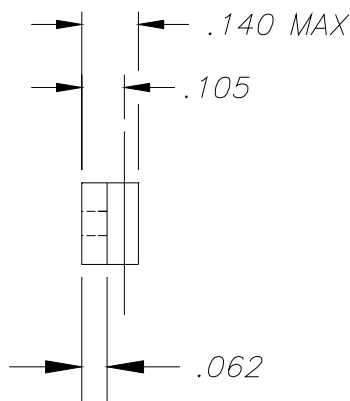
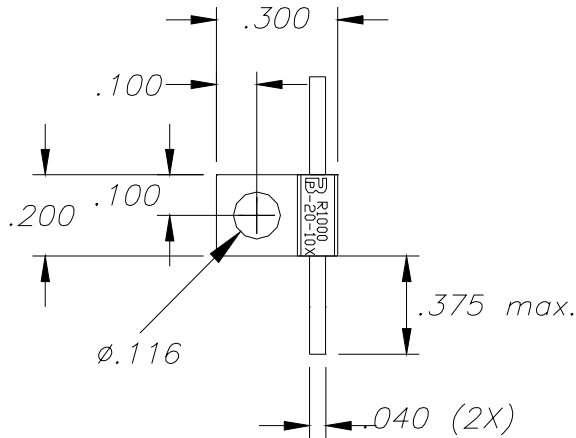


BeO

FLANGED RESISTOR

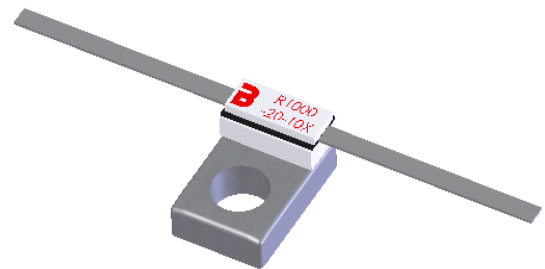
Features:

- ◆ BeO material
- ◆ 20 Watt power handling
- ◆ Flange mount

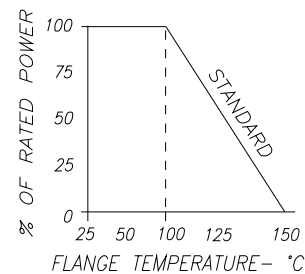


General Description:

The R1000-20-10X is a 100 Ohm BeO leaded resistor mounted onto a flange. It offers a power rating of 20 Watts max while maintaining a flange temperature of 100°C.



DERATING CURVE:



Parameter	Min.	Typ.	Max.	Units
Power			20	Watts
Resistance	95	100	105	Ohms
Capacitance at 1 MHz		.70		pF
Flange Temperature			100	°C

* Barry Industries reserves the right to change part number and or process without notification

Barry Industries, Inc., 60 Walton St., Attleboro, MA 02703 T: 508-226-3350 F: 508-226-3317 E-mail: sales@barryind.com

Barry Industries maintains an ISO 9001 Certified Quality Management System

Origination Date	Revision Date	Rev.
03/01/07	05/08/07	B