



# R1000-150-4X



WWW.BARRYIND.COM

BeO

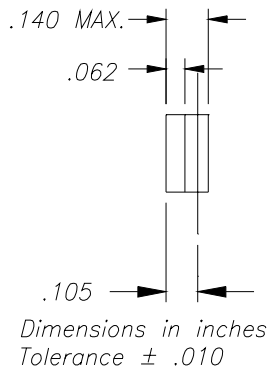
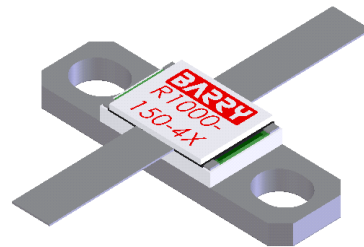
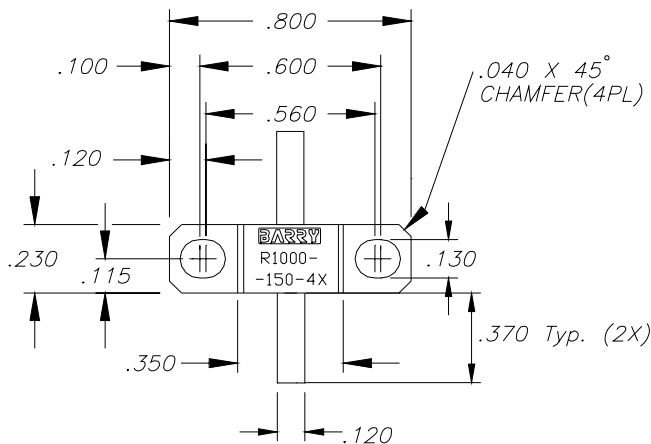
## FLANGED RESISTOR

### Features:

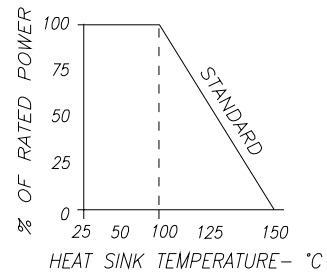
- ◆ BeO material
- ◆ 150 Watt input power
- ◆ Flange mounted

### General Description:

The R1000-150-4X is a 100 Ohm leaded resistor mounted onto a flange. It offers an input power of 150 Watts max while maintaining a flange temperature of 100°C.



### DERATING CURVE:



Parameter	Min.	Typ.	Max.	Units
Input Power			150	Watts
Resistance	95	100	105	Ohms
Flange Temperature			100	°C

\* Barry Industries reserves the right to change part number and or process without notification

Barry Industries, Inc., 60 Walton St., Attleboro, MA 02703 T: 508-226-3350 F: 508-226-3317 E-mail: sales@barryind.com

Barry Industries maintains an ISO 9001 Certified Quality Management System

Origination Date	Revision Date	Rev.
03/26/07	03/26/07	-