

ALUMINA

ATTENUATOR

Features:

- ◆ .015" Alumina
- ◆ 150 mW power dissipation
- ◆ Compact construction



General Description:

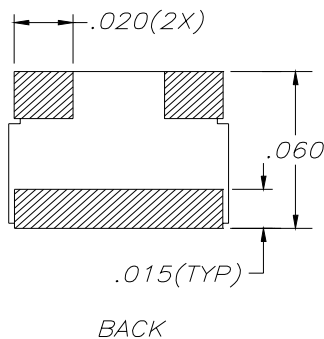
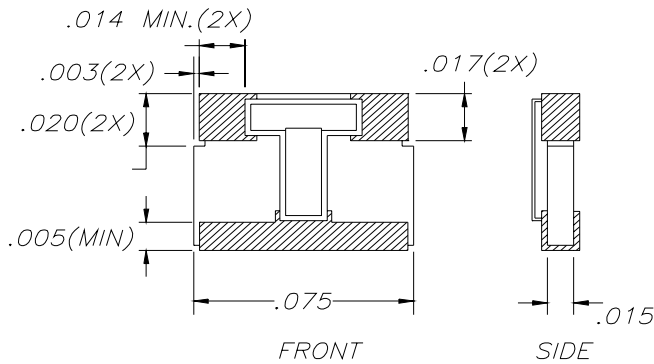
The AT0706CB-XXXX*JN-91 is solder mountable chip attenuator. (See *below for ordering*). It offers a frequency range from DC - 3 GHz and a power rating of 150 mW while maintaining a constant heat sink temperature of 70°C max.

*XXXX = Value in Decibels

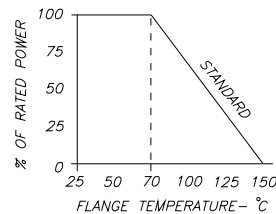
- 1.....0100
- 2.5.....0250
- 12.....1200
- 18.5.....1850

Sample part number:

AT0706CB-0250JN-91 = 2.5dB



DERATING CURVE:



Parameter	Min.	Typ.	Max.	Units
Frequency Range	DC		3	GHz
Input Return Loss	17			dB
Output Return Loss	17			dB
Power Dissipation			150	mWatts
Heat Sink Temperature			70	°C

* Barry Industries reserves the right to change part number and or process without notification

Barry Industries, Inc., 60 Walton St., Attleboro, MA 02703 T: 508-226-3350 F: 508-226-3317 E-mail: sales@barryind.com

Barry Industries maintains an ISO 9001 Certified Quality Management System

Origination Date	Revision Date	Rev.
08/29/06	08/29/06	-