



WWW.BARRYIND.COM

# T50R0-60-9X



## BeO

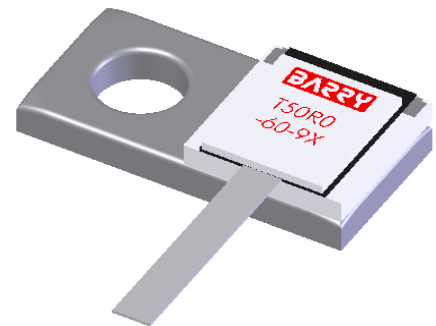
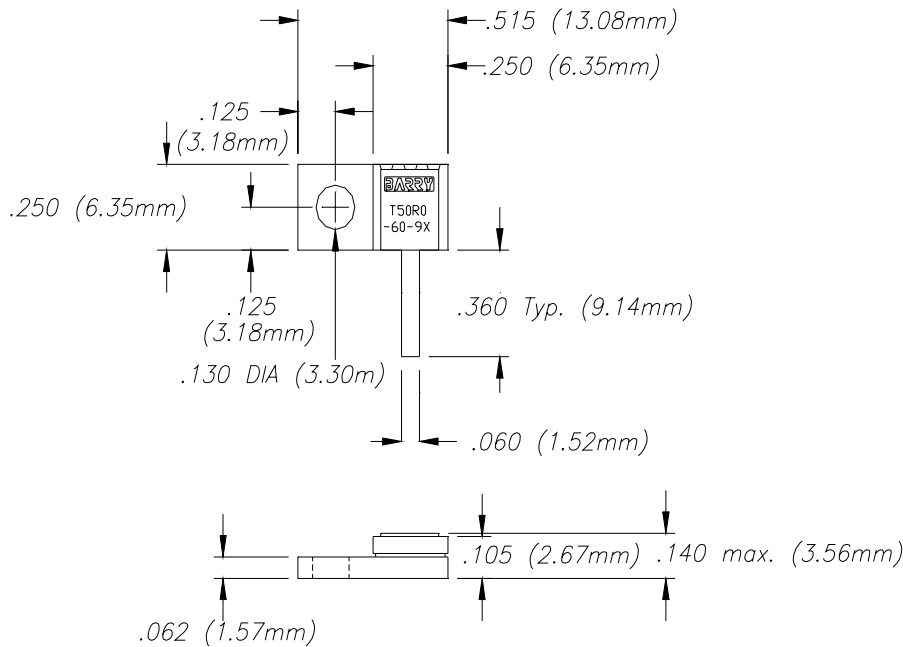
## FLANGED TERMINATION

### Features:

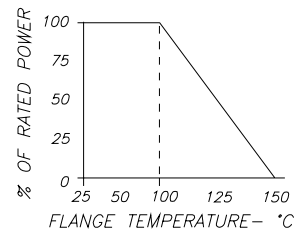
- ◆ BeO Material
- ◆ 60 Watt Input Power
- ◆ DC - 6 GHz Performance
- ◆ Flange Mount

### General Description:

The T50R0-60-9X is a flanged 50 ohm, BeO termination. It has an input power of 60 watts, while maintaining a constant flange temperature of 100°C. It offers an excellent frequency range from DC to 6 GHz.



DERATING CURVE:



Dimensions in inches (mm)  
Tolerance ± .010 (.254)  
unless otherwise stated

Parameter	Min.	Typ.	Max.	Units
Frequency Range	DC		6	GHz
Input Return Loss	17			dB
Input Power			60	Watts
Resistance	47.5	50	52.5	Ohms
Flange Temperature			100	°C

Barry Industries reserves the right to change part number and or process without notification.

Barry Industries, Inc., 60 Walton St., Attleboro, MA 02703 T: 508-226-3350 F: 508-226-3317 E-mail: sales@barryind.com

Barry is ISO 9001:2000 Certified by



Origination Date	Revision Date	Rev.
05/18/04	04/11/08	A