



WWW.BARRYIND.COM

T50R0-30-10X



BeO

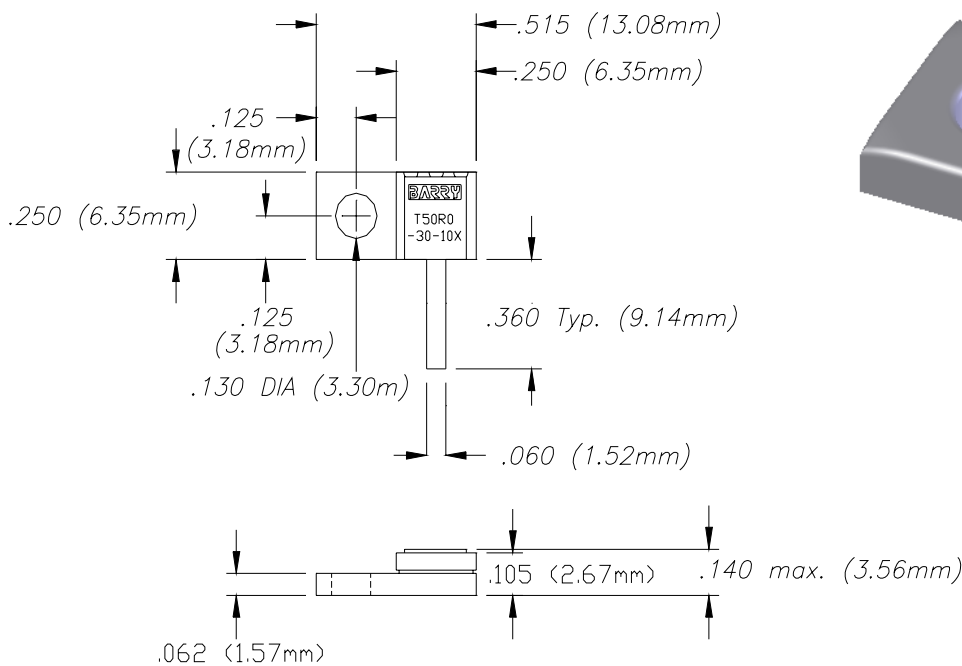
FLANGED TERMINATION

Features:

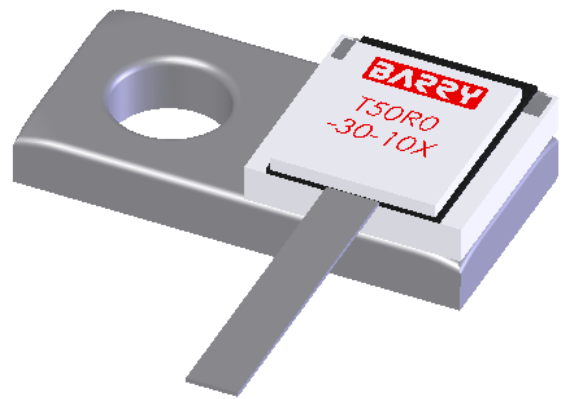
- ◆ BeO Material
- ◆ DC - 6 GHz Performance
- ◆ 30 Watt Input Power
- ◆ Flange Mount

General Description:

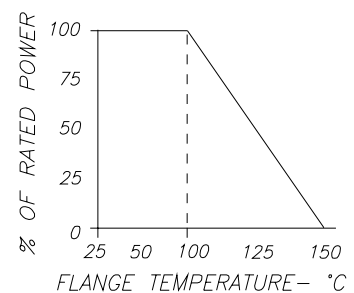
The T50R0-30-10X is a flanged 50 ohm BeO termination. It has an input power of 30 watts, while maintaining a constant flange temperature of 100°C. It offers a frequency range from DC to 6 GHz.



Dimensions in inches (mm)
Tolerance $\pm .010$ (.254)
unless otherwise stated



DERATING CURVE:



Parameter	Min.	Typ.	Max.	Units
Frequency Range	DC		6	GHz
Input Return Loss	17			dB
Input Power			30	Watts
Resistance	47.5	50	52.5	Ohms
Flange Temperature			100	°C

Barry Industries reserves the right to change part number and or process without notification

Barry Industries, Inc., 60 Walton St., Attleboro, MA 02703 T: 508-226-3350 F: 508-226-3317 E-mail: sales@barryind.com

Barry is ISO 9001:2000 Certified by



Origination Date	Revision Date	Rev.
01/28/08	01/28/08	-