



WWW.BARRYIND.COM

T50R0-250-12X



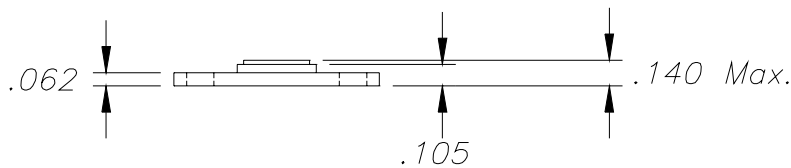
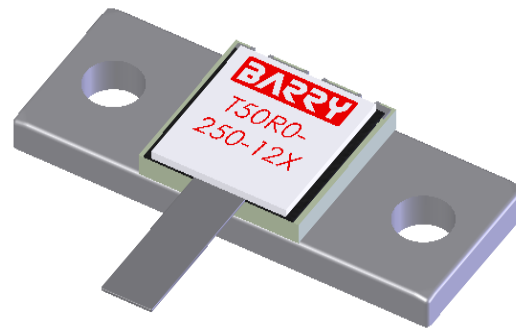
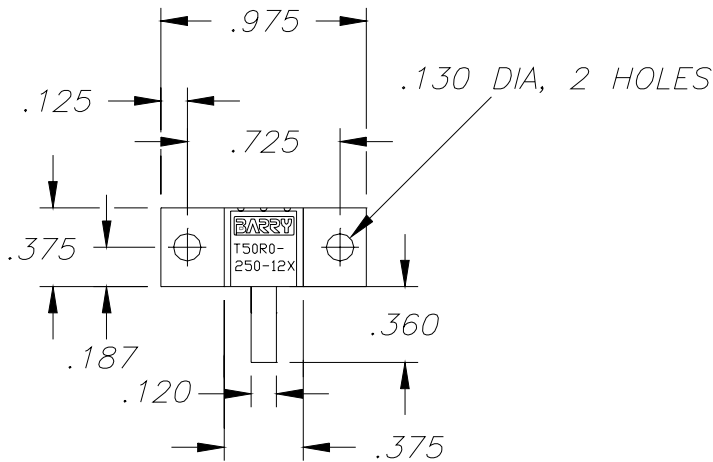
BeO FLANGED TERMINATION

Features:

- ◆ BeO Material
- ◆ DC- 4 GHz Performance
- ◆ 250 Input Power
- ◆ Flange Mount

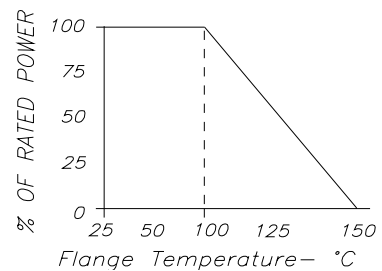
General Description:

The T50R0-250-12X is a flanged 50 ohm, BeO termination. It has an input power of 250 watts max, while maintaining a constant flange temperature of 100°C. It offers a frequency range from DC to 4 GHz.



Dimensions in inches.
Tolerance $\pm .010$ unless otherwise stated

DERATING CURVE:



Parameter	Min.	Typ.	Max.	Units
Frequency Range	DC		4	GHz
Input Return Loss	16			dB
Input Power			250	Watts
Resistance	47.5	50	52.5	Ohms
Flange Temperature			100	°C

Barry Industries reserves the right to change part number and or process without notification.

Barry Industries, Inc., 60 Walton St., Attleboro, MA 02703 T: 508-226-3350 F: 508-226-3317 E-mail: sales@barryind.com

Barry Industries maintains an ISO 9001 Certified Quality Management System

Origination Date	Revision Date	Rev.
02/12/08	02/12/08	-