



WWW.BARRYIND.COM

# T50R0-250-12X



## BeO

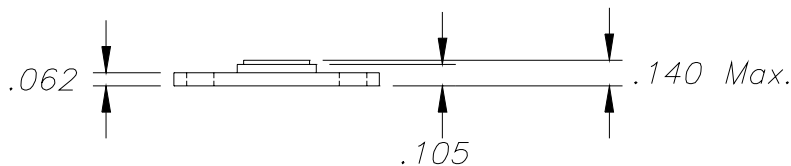
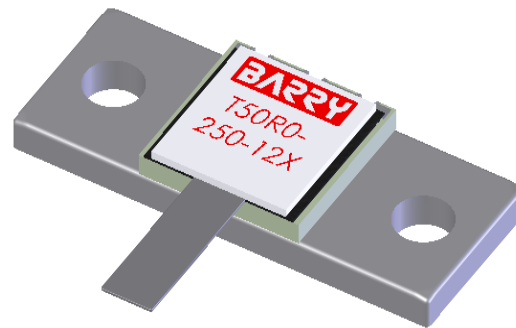
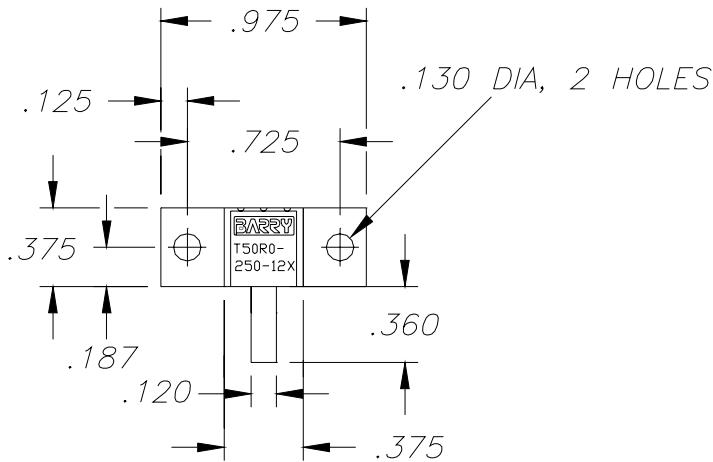
## FLANGED TERMINATION

### Features:

- ◆ BeO Material
- ◆ DC- 4 GHz Performance
- ◆ 250 Input Power
- ◆ Flange Mount

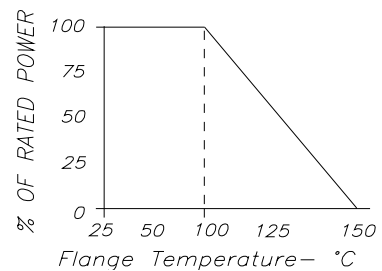
### General Description:

The T50R0-250-12X is a flanged 50 ohm, BeO termination. It has an input power of 250 watts max, while maintaining a constant flange temperature of 100°C. It offers a frequency range from DC to 4 GHz.



Dimensions in inches.  
Tolerance  $\pm .010$  unless otherwise stated

DERATING CURVE:



| Parameter          | Min. | Typ. | Max. | Units |
|--------------------|------|------|------|-------|
| Frequency Range    | DC   |      | 4    | GHz   |
| Input Return Loss  | 16   |      |      | dB    |
| Input Power        |      |      | 250  | Watts |
| Resistance         | 47.5 | 50   | 52.5 | Ohms  |
| Flange Temperature |      |      | 100  | °C    |

Barry Industries reserves the right to change part number and or process without notification.

Barry Industries, Inc., 60 Walton St., Attleboro, MA 02703 T: 508-226-3350 F: 508-226-3317 E-mail: sales@barryind.com

Barry is ISO 9001:2000 Certified by

| Origination Date | Revision Date | Rev. |
|------------------|---------------|------|
| 02/12/08         | 02/12/08      | -    |