



WWW.BARRYIND.COM

T50R0-150-25X



BeO

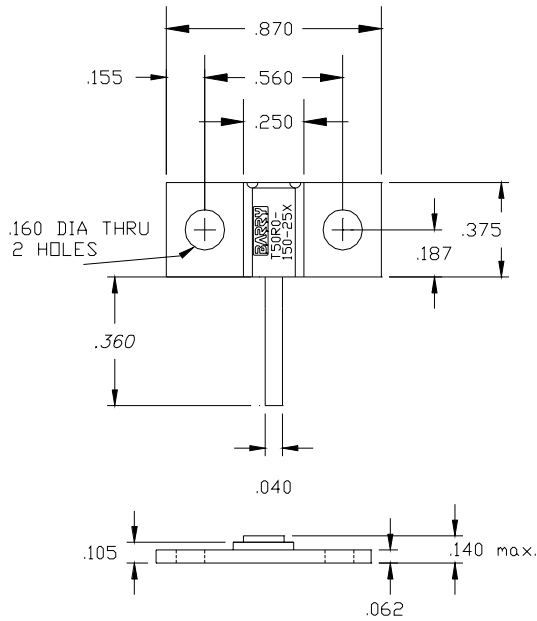
FLANGED TERMINATION

Features:

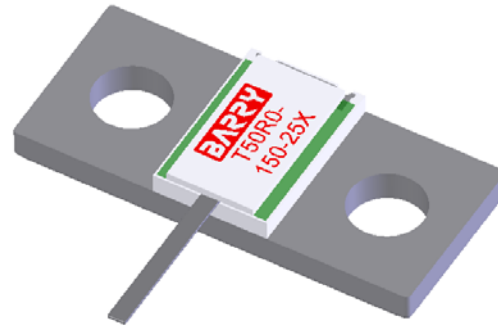
- ◆ BeO Material
- ◆ DC-4 GHz performance
- ◆ 150 Watt Input Power
- ◆ Flange Mount

General Description:

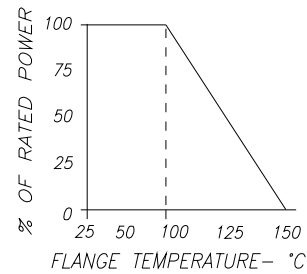
The T50R0-150-25X is a flanged 50 ohm, BeO termination. It has an input power of 150 watts max, while maintaining a constant flange temperature of 100°C. It offers a frequency range from DC - 4 GHz.



Dimensions in inches
Tolerance $\pm .010$
unless otherwise stated



DERATING CURVE:



Parameter	Min.	Typ.	Max.	Units
Frequency Range	DC		4	GHz
Return Loss	20			dB
Resistance	47.5	50	52.5	Ohms
Input Power			150	Watts
Heat Sink Temperature			100	°C

Barry Industries reserves the right to change part number and or process without notification.

Barry Industries, Inc., 60 Walton St., Attleboro, MA 02703 T: 508-226-3350 F: 508-226-3317 E-mail: sales@barryind.com

Barry Industries maintains an ISO 9001 Certified Quality Management System

Origination Date	Revision Date	Rev.
03/18/08	03/18/08	-