



WWW.BARRYIND.COM

# T50R0-100-4X



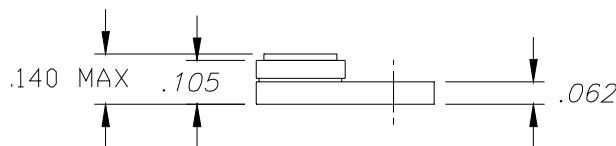
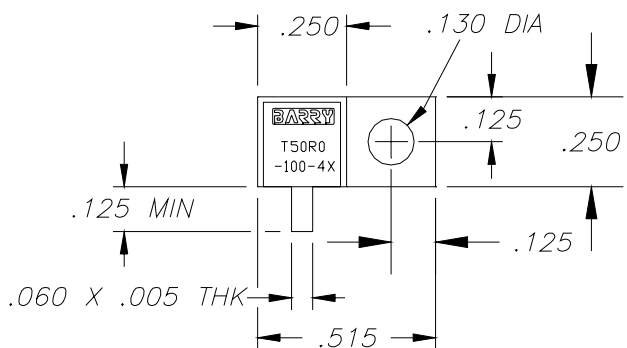
## BeO FLANGED TERMINATION

### Features:

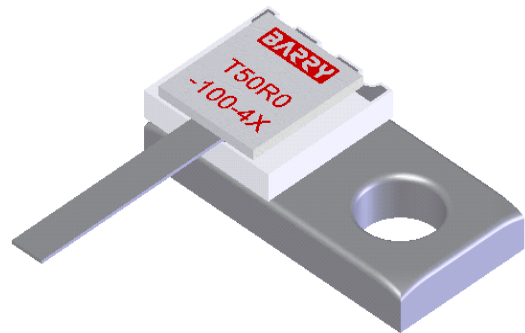
- ◆ BeO material
- ◆ 100 Watt input power
- ◆ DC - 6 GHz performance
- ◆ Flange mount

### General Description:

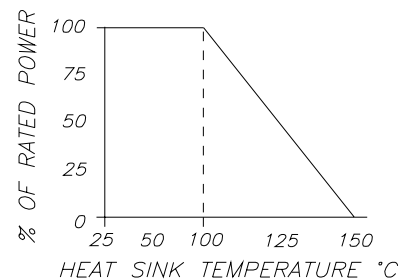
The T50R0-100-4X is a 50 ohm BeO flanged termination with an input power of 100 watts while maintaining a constant 100°C flange temperature and a frequency range from DC to 6 GHz.



Dimensions in inches  
Tolerance  $\pm .010$  unless otherwise stated



DERATING CURVE:



Parameter	Min.	Typ.	Max.	Units
Frequency Range	DC		6	GHz
Input Return Loss	17			dB
Resistance	47.5	50	52.5	Ohms
Input Power			100	Watts
Flange Temperature			100	°C

\* Barry Industries reserves the right to change part number and or process without notification

Barry Industries, Inc., 60 Walton St., Attleboro, MA 02703 T: 508-226-3350 F: 508-226-3317 E-mail: sales@barryind.com

Barry is ISO 9001:2000 Certified by

Origination Date	Revision Date	Rev.
7/31/07	7/31/07	-