



WWW.BARRYIND.COM

T50R0-100-21X



BeO

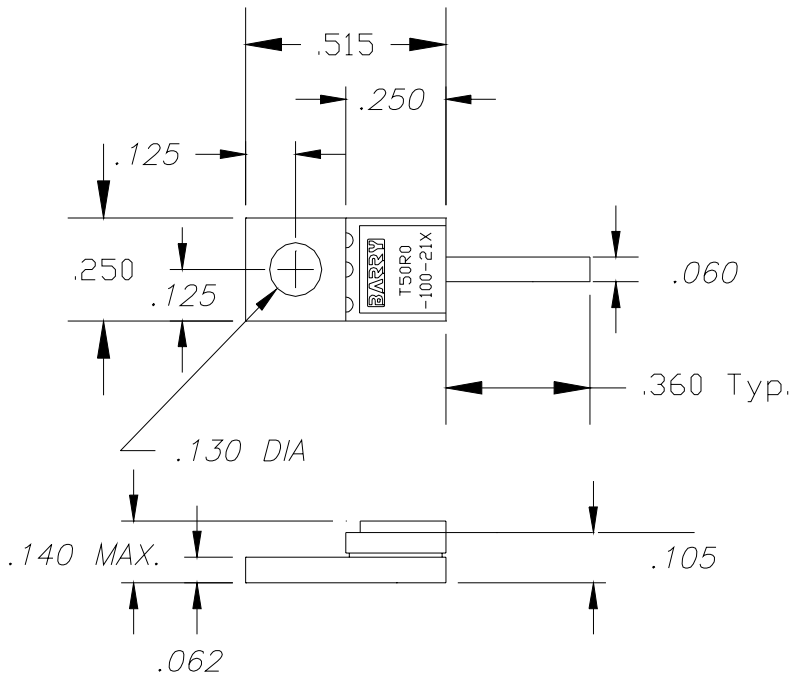
FLANGED TERMINATION

Features:

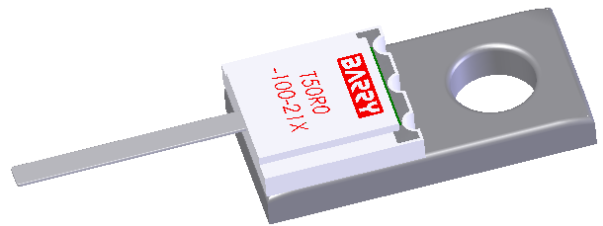
- ◆ BeO Material
- ◆ DC - 6 GHz performance
- ◆ 100 Watt Input Power
- ◆ Flange Mount

General Description:

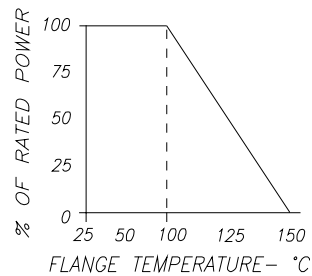
The T50R0-100-21X is a flanged, 50 ohm BeO termination. It has an input power of 100 watts, while maintaining a constant 100°C flange temperature. It offers an excellent frequency range from DC to 6 GHz.



Dimensions in inches
Tolerance $\pm .010$
unless otherwise stated



DERATING CURVE:



Parameter	Min.	Typ.	Max.	Units
Frequency Range	DC		6	GHz
Input Return Loss	17			dB
Resistance	47.5	50	52.5	Ohms
Power			100	Watts
Flange Temperature			100	°C

Barry Industries reserves the right to change part number and or process without notification.

Barry Industries, Inc., 60 Walton St., Attleboro, MA 02703 T: 508-226-3350 F: 508-226-3317 E-mail: sales@barryind.com
Barry Industries maintains an ISO 9001 Certified Quality Management System

Origination Date	Revision Date	Rev.
11/16/05	03/18/08	A