



WWW.BARRYIND.COM

# T50R0-10-3X



## BeO

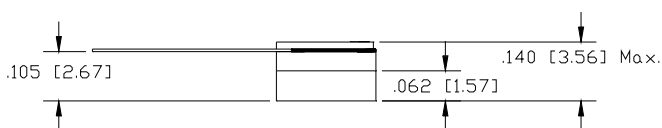
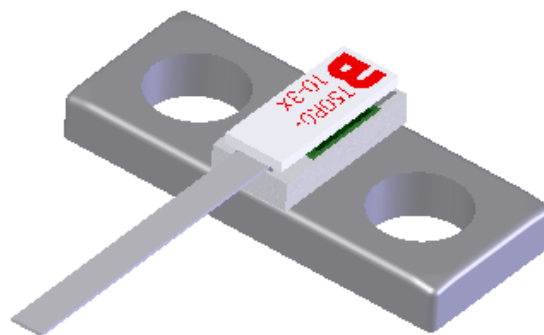
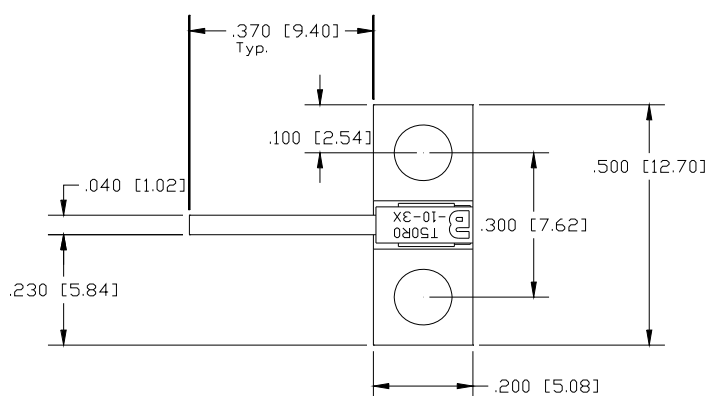
## FLANGED TERMINATION

### Features:

- ◆ BeO Material
- ◆ DC - 4 GHz Performance
- ◆ 10 Watt Input Power
- ◆ Flange Mount

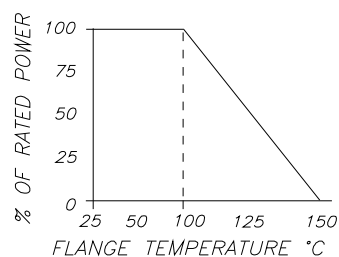
### General Description:

The T50R0-10-3X is a flanged 50 ohm BeO termination. It has an input power of 10 watts, while maintaining a constant flange temperature of 100°C. It offers a frequency range from DC to 4 GHz.



Dimensions in inches [mm]  
Tolerance  $\pm .010$  [.254]  
unless otherwise stated

### DERATING CURVE:



Parameter	Min.	Typ.	Max.	Units
Frequency Range	DC		4	GHz
Input Return Loss (DC -2 GHz) (2- 4 GHz)	18 14			dB
Input Power			10	Watts
Resistance	47.5	50.0	52.5	Ohms
Flange Temperature			100	°C

Barry Industries reserves the right to change part number and or process without notification.

Barry Industries, Inc., 60 Walton St., Attleboro, MA 02703 T: 508-226-3350 F: 508-226-3317 E-mail: sales@barryind.com  
Barry Industries maintains an ISO 9001 Certified Quality Management System

Origination Date	Revision Date	Rev.
01/28/08	02/18/09	A