



WWW.BARRYIND.COM

# RXXXX-250-5E



## BeO

## FLANGED RESISTOR

### Features:

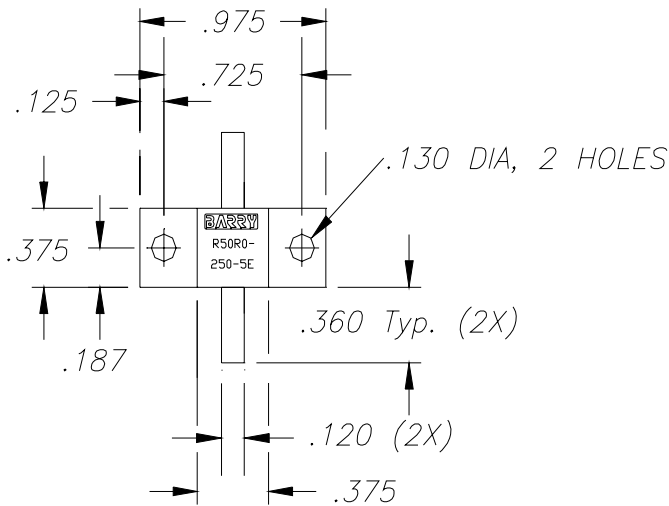
- ◆ BeO Material
- ◆ 250 Watt Input Power
- ◆ Flange Mount

### General Description:

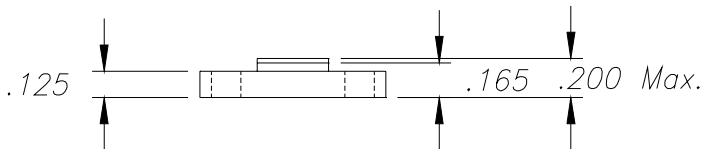
The RXXXX-250-5E is a flanged BeO resistor. It has an input power of 250 watts max, while maintaining a constant flange temperature of 100°C. It offers standard resistance values of 50 and 100 ohms.

*For other values, please consult the factory.*

Example part number: R1000-250-5E = 100 ohms  
R50R0-250-5E = 50 ohms

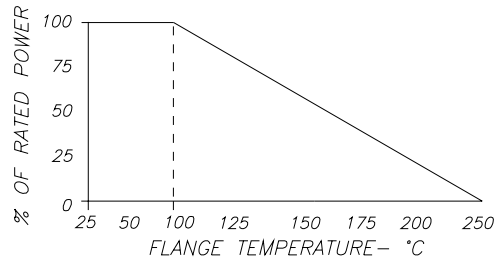


Part shown represents a 50 ohm device.



*Dimensions in inches  
Tolerance ±.010 unless  
otherwise stated*

DERATING CURVE:



Parameter	Min.	Typ.	Max.	Units
Input Power			250	Watts
Resistance		+/- 5%		Ohms
Flange Temperature			100	°C

**Barry Industries reserves the right to change part number and or process without notification**

Barry Industries, Inc., 60 Walton St., Attleboro, MA 02703 T: 508-226-3350 F: 508-226-3317 E-mail: sales@barryind.com

Barry Industries maintains an ISO 9001 Certified Quality Management System

Origination Date	Revision Date	Rev.
04/19/07	02/12/08	A