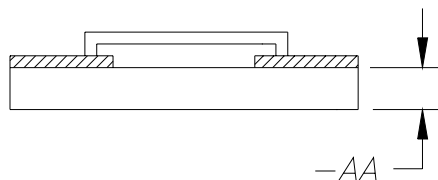
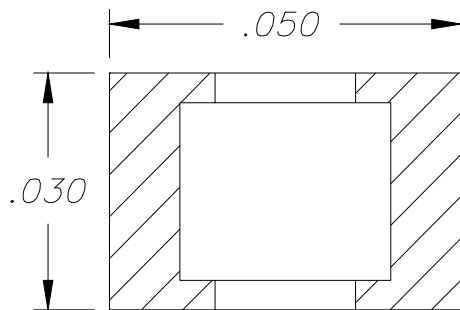


Alumina

FLIP CHIP RESISTOR

Features:

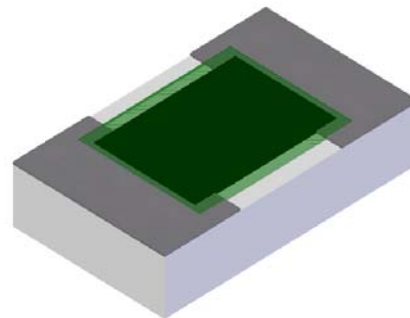
- ◆ Alumina material
- ◆ Flip Chip
- ◆ .15 Watt input power



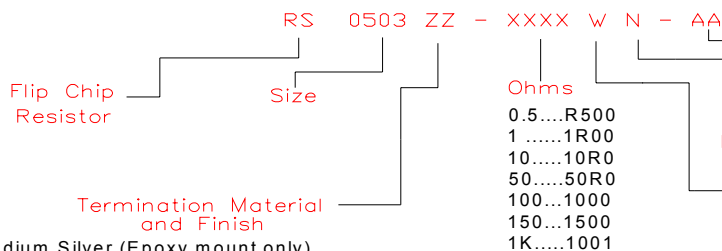
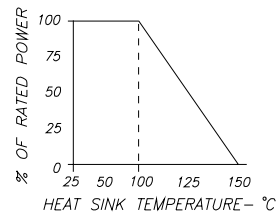
Dimensions in inches
Tolerance $\pm .005$

General Description:

The RS0503ZZ-XXXXWN-AA series is a flip chip resistor. It has an input power of .15 watts while maintaining a mounting surface temperature of 100°C. It offers a small package design available in Alumina. See below for ordering options.



DERATING CURVE:



Termination Material and Finish
 BA - Palladium Silver (Epoxy mount only)
 CB - Tin lead over nickel over silver (Solder mount only)
 GA - Gold (Epoxy mount only, wire bond)
 CT - Matte Tin over Nickel over Silver (Solder mount only)

Ohms
 0.5....R500
 11R00
 10.....10R0
 50.....50R0
 100....1000
 150...1500
 1K.....1001

Thickness, Material and Input power
 -90 - .010" Alumina .15 Watts
 -91 - .015" Alumina .15 Watts
 (N)ormal Inspection
 Tolerance
 F - 1%
 G - 2%
 J - 5%
 K - 10%
 L - 20%
 X - Special

* Barry Industries reserves the right to change part number and or process without notification