



RM2010CT-1000GN-99-02



WWW.BARRYIND.COM

BeO

100 Ohm

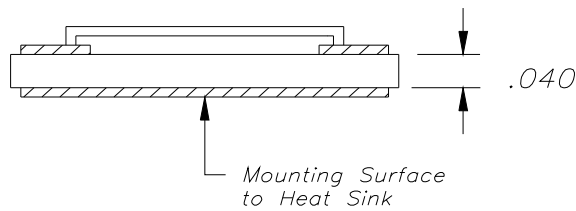
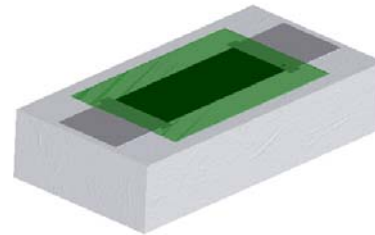
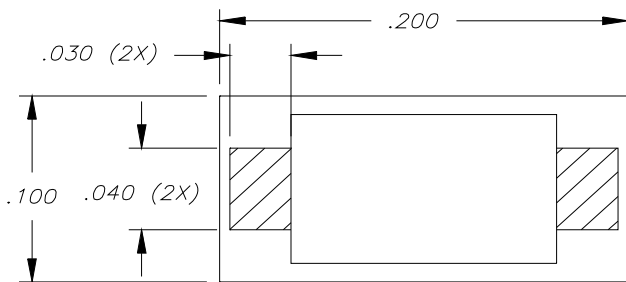
CHIP RESISTOR

Features:

- ◆ BeO Material
- ◆ 40 Watt Input Power
- ◆ Compact Construction
- ◆ CT - Matte Tin over Nickel over Silver

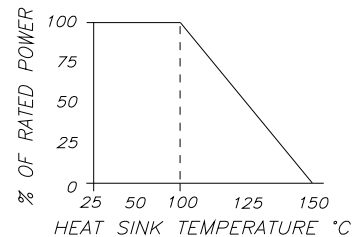
General Description:

The RM2010CT-1000GN-99-02 is a BeO 100 ohm solder mountable chip resistor. It has an input power of 40 watts, while maintaining a constant mounting surface temperature of 100°C. Its compact size is ideal for miniature electronic components.



- All Dimensions in inches
- Tolerance $\pm .005$

DERATING CURVE:



Parameter	Min.	Typ.	Max.	Units
Input Power			40	Watts
Resistance	98	100	102	Ohms
Mounting Surface Temperature			100	°C

Barry Industries reserves the right to change part number and or process without notification.

Barry Industries, Inc., 60 Walton St., Attleboro, MA 02703 T: 508-226-3350 F: 508-226-3317 E-mail: sales@barryind.com

Barry is ISO 9001:2000 Certified by



Origination Date	Revision Date	Rev.
06/28/07	01/05/09	A