



WWW.BARRYIND.COM

T50R0-125-21X



BeO

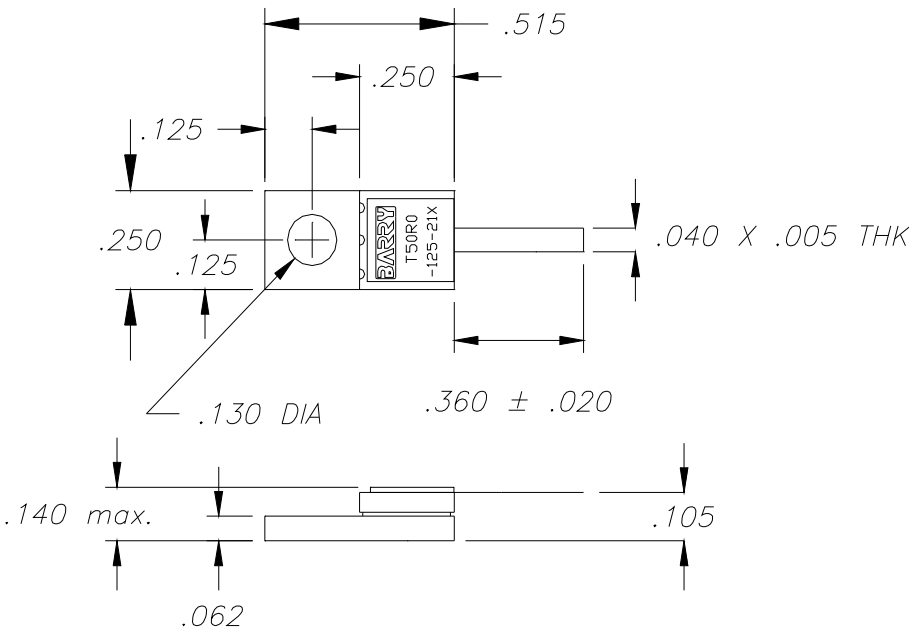
FLANGED TERMINATION

Features:

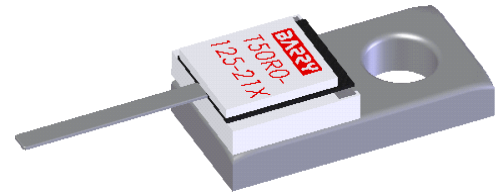
- ◆ BeO Material
- ◆ DC - 6 GHz Performance
- ◆ 125 Watt Input Power
- ◆ Flange Mount

General Description:

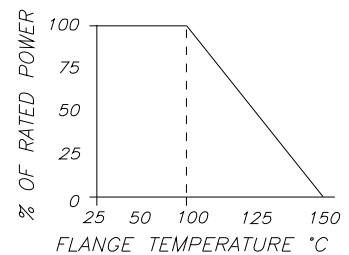
The T50R0-125-21X is a 50 ohm flanged BeO termination. It has an input power of 125 watts, while maintaining a constant flange temperature of 100°C. It offers an excellent frequency range of DC - 6 GHz.



Dimensions in inches
Tolerance ± .010
unless otherwise noted



DERATING CURVE:



Parameter	Min.	Typ.	Max.	Units
Frequency Range	DC		6	GHz
Input Return Loss	17			dB
Resistance	47.5	50	52.5	Ohms
Input Power			125	Watts
Flange Temperature			100	°C

Barry Industries reserves the right to change part number and or process without notification

Barry Industries, Inc., 60 Walton St., Attleboro, MA 02703 T: 508-226-3350 F: 508-226-3317 E-mail: sales@barryind.com
Barry Industries maintains an ISO 9001 Certified Quality Management System

Origination Date	Revision Date	Rev.
11/26/07	06/04/12	A