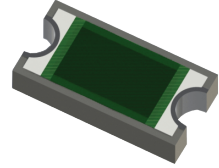


### RYC1206ZZ-XXXXJN-2S Features:

- Wraparound w/ Isolated Center Pad Configuration
- Solder Attachment
- Customer Defined Testing Available
- RoHS Compliant Available
- Tape & Reel or Waffle Pack Available (Standard is bulk)
- 5% Resistor Tolerance

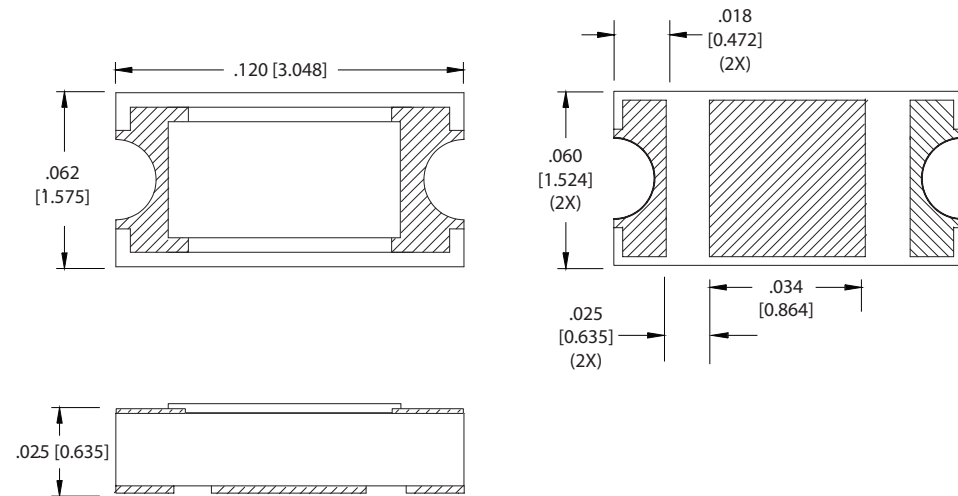


### RYC1206ZZ-XXXXJN-2S Parameters:

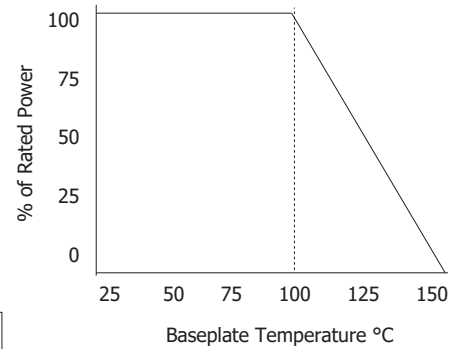
Resistance Range: 10Ω - 1KΩ  
 Rated Power: 10W\*  
 Construction: Thick Film on AIN  
 Operating Temperature: -55 to +150°C

\* Rating based on ≤100°C constant baseplate temperature

### RYC1206ZZ-XXXXJN-2S Dimensions:



### RYC1206ZZ-XXXXJN-2S Power Derating Curve



Available

Dimensions in inches [mm]  
 Tolerance is ± 0.010 [0.254]  
 unless otherwise stated

### Ordering Information:

RYC	1206	ZZ	-	XXXX	J	N	-	2S	UU
Prefix for Wraparound Resistor w/ Isolated Backpad	Size 1206	Value Code Examples 10R0 - 10Ω 50R0 - 50Ω 1000 - 100Ω		Value Code Examples 1500 - 150Ω 5000 - 500Ω 1001 - 1KΩ	Tolerance J - 5%	Normal Inspection Contact factory for additional options		Substrate 2S - 0.025" AIN	Packaging Blank - Bulk TR - Tape and Reel WP - Waffle Pack
Terminal Metallization		RoHS		Magnetic		Solder		Epoxy	Wirebond
CT - 100% Matte Tin over Nickel over Silver		Yes		Yes		Yes		No	No
CB - Sn62 over Nickel over Silver		No		Yes		Yes		No	No

Barry Industries reserves the right to change part number and/or process without notification.



ORIG.	REV.	No.
SEP 23 2015	-	-

## RYC1206ZZ-XXXXJN-2S Reliability Specifications:

Parameter:	Test Condition:	Results:
Short Time Overload	Apply 1.1x Rated Power for 5 Seconds.	≤ 5.0% Resistance Shift
Rated Load Life	Apply 1/2 Power Under 40°C ±2°C 90 Minutes on/ 30 Minutes off. Repeat for 100 hours	≤ 5.0% Resistance Shift
Moisture Resistance	MIL-PRF-55342 para 4.8.9 95% RH, 25°C - 65°C	≤ 5.0% Resistance Shift
Resistance to Soldering Heat	MIL-STD-202 Method 210 and MIL-PRF-55342 Para 4.8.8.1	≤ 5.0% Resistance Shift
Resistance to Bonding Exposure	MIL-PRF-55342 Para 4.8.8.2	≤ 5.0% Resistance Shift
Solderability	MIL-PRF-55342 Para 4.8.12	>95% Covered
High Temperature Storage	125°C ±2°C for 500 Hours	1.) ≤ 5.0% Resistance Shift 2.) No Significant Abnormality (Visual)
Thermal Shock	-65°C to +150°C 30 Minutes Dwell, 5 Cycles	1.) ≤ 5.0% Resistance Shift 2.) No Significant Abnormality (Visual)

Barry Industries reserves the right to change part number and/or process without notification.

