



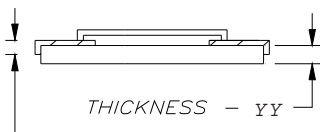
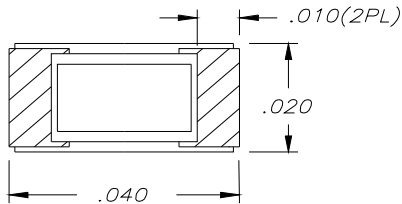
WWW.BARRYIND.COM

RK0402ZZ-XXXXWN-YY*

BeO or Alumina 1/4 WRAP CHIP RESISTOR

Features:

- ◆ BeO or Alumina material
- ◆ 1/4 Wrap
- ◆ .5 to 1 Mohm available



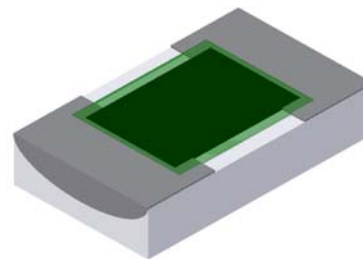
Half Thickness of material minimum

- All Dimensions in inches
- Tolerance $\pm .005$
- Full part number (RK0402ZZ-XXXXWN-YY)
Example part number (RK0402CT-50R0JN-91)
- Dimensions apply before tinning

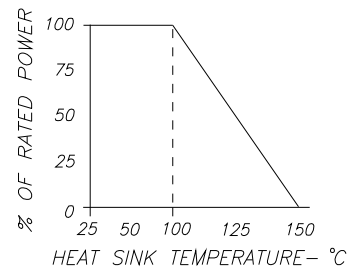
General Description:

The RK0402ZZ-XXXXWN-YY* series is a quarter wrap style chip resistor. It offers a small package design available in BeO or Alumina material.

* See below for ordering options.



DERATING CURVE:



<p>Resistor</p> <p>1/4 Wrap</p> <p>Termination Material and Finish</p> <p>BA - available on Alumina: Palladium Silver, Epoxy Mount, RoHS Compliant</p> <p>CB - available on Alumina & BeO: Tin Lead over Nickel over Silver, Solder Mount, NOT RoHS</p> <p>CT - available on Alumina & BeO: Matte Tin over Nickel over Silver, Solder Mount, RoHS Compliant</p> <p>GA - available on Alumina: Gold, Epoxy Mount, Wire Bond, RoHS Compliant</p> <p>JA - available on BeO: Gold over Platinum Gold, Epoxy Mount, Wire Bond, RoHS Compliant</p>	<p>R K 0402 ZZ - XXXX W N - YY</p> <p>Ohms</p> <p>0.5 . . . R500 1 . . . 1R00 10 . . . 10R0 50 . . . 50R0 100 . . . 1000 150 . . . 1500 1K . . . 1001 10K . . . 1002 100K . . . 1003 470K . . . 4703 1M . . . 1004</p>	<p>(N)ormal Inspection</p> <p>Thickness and Material</p> <p>-90010" Alumina (.08 Watts) -91015" Alumina (.05 Watts) -95010" BeO (1.5 Watts) -96015" BeO (0.9 Watts)</p> <p>Tolerance</p> <p>F - 1% G - 2% J - 5% K - 10% L - 20% X = Special</p>
--	--	---

* Barry Industries reserves the right to change part number and or process without notification

Barry Industries, Inc., 60 Walton St., Attleboro, MA 02703 T: 508-226-3350 F: 508-226-3317 E-mail: sales@barryind.com

Barry Industries maintains an ISO 9001 Certified Quality Management System

Origination Date	Revision Date	Rev.
11/13/07	11/03/09	A