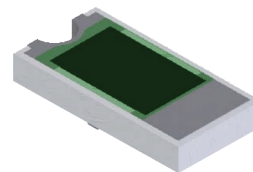


TVC1206CT-50R0JN-91 Features:

- Solderable Terminals
- RoHS Compliant
- Customer Defined Testing Available
- High Rated Power
- ±5% Resistor Tolerance
- Tape & Reel and Waffle Pack Available (Standard is Bulk)



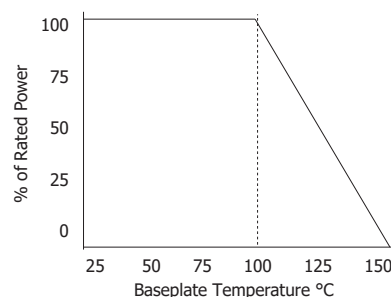
TVC1206CT-50R0JN-91 Parameters:

Operating Frequency:	DC - 5GHz	
Rated Power:	6W*	
Return Loss (Typical)**:	20dB or Better	(DC - 3GHz)
	17dB or Better	(>3 - 4GHz)
	14dB or Better	(>4 - 5GHz)
Impedance:	50Ω*** (47.5Ω Min., 52.5Ω Max.)	
Resistor Construction:	Thick Film on Alumina	
Operating Temperature:	-55 to +150°C	

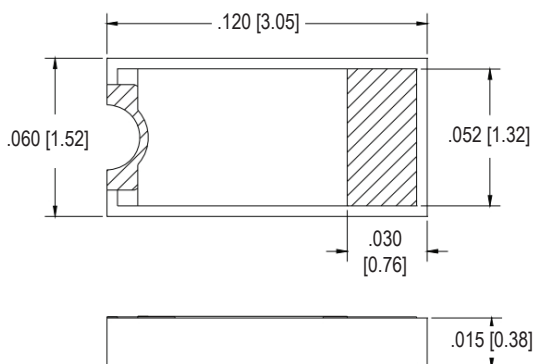
Actual Size

* Rating based on ≤100°C constant baseplate temperature
 ** In a matched, continuous 50Ω system with proper workmanship
 *** Other values and tolerances available. Contact factory.

TVC1206CT-50R0JN-91 Power Derating Curve



TVC1206CT-50R0JN-91 Dimensions:



Dimensions in inches [mm]
 Tolerance is ± 0.005 [0.13]
 unless otherwise stated

Ordering Information:

Prefix for Chip Termination w/ Castellations	Size	Terminal Metallization	Impedance Value Code	Tolerance	RoHS	Magnetic	Solder	Substrate	Epoxy	Wirebond	Package
TVC	1206	CT - Matte Tin over Nickel over Silver	50R0	J - 5%	Yes	Yes	Yes	91 - 0.015" Alumina	No	No	Blank - Bulk TR - Tape & Reel WP - Waffle Pack
											UU

Barry Industries reserves the right to change part number and/or process without notification.

TVC1206CT-50R0JN-91 Reliability Specifications:

Parameter:	Test Condition:	Results:
Short Time Overload	Apply 1.1x Rated Power for 5 Seconds.	≤ 5.0% Resistance Shift
Rated Load Life	Apply 1/2 Power Under 40°C ±2°C 90 Minutes on/ 30 Minutes off. Repeat for 100 hours	≤ 5.0% Resistance Shift
Moisture Resistance	MIL-PRF-55342 para 4.8.9 95% RH, 25°C - 65°C	≤ 5.0% Resistance Shift
Resistance to Soldering Heat	MIL-STD-202 Method 210 and MIL-PRF-55342 Para 4.8.8.1	≤ 5.0% Resistance Shift
Solderability	MIL-PRF-55342 Para 4.8.12	>95% Covered
High Temperature Storage	125°C ±2°C for 500 Hours	1.) ≤ 5.0% Resistance Shift 2.) No Significant Abnormality (Visual)
Thermal Shock	-65°C to +150°C 30 Minutes Dwell, 5 Cycles	1.) ≤ 5.0% Resistance Shift 2.) No Significant Abnormality (Visual)

Barry Industries reserves the right to change part number and/or process without notification.