



WWW.BARRYIND.COM

# TVC2010CB-XXXX\*JN-99

BeO

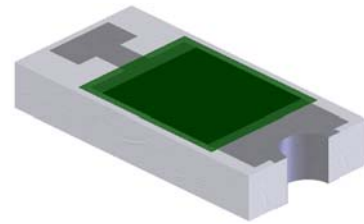
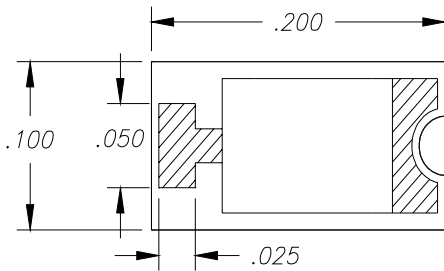
## CHIP TERMINATION

### Features:

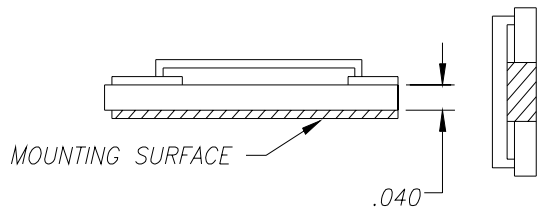
- ◆ BeO Material
- ◆ DC-4 GHz Performance
- ◆ 10 Watt Input Power
- ◆ CB-Tin Lead over Nickel over Silver
- ◆ Solder Mountable

### General Description:

The TVC2010CB-XXXX\*JN-99 is a solder mountable BeO chip termination. It has an input power of 10 watts, while maintaining a constant mounting surface temperature of 100°C. It offers a frequency range from DC to 4 GHz.



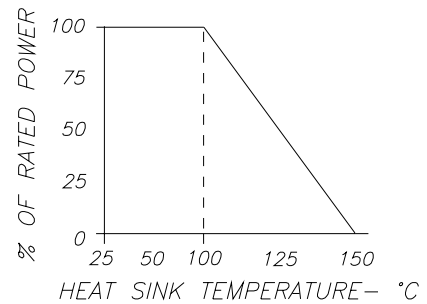
\*XXXX = Resistance Value in Ohms



Dimensions in inches  
Tolerance ± .010  
unless otherwise stated

- 0.5...R500
- 1.....1R00
- 10....10R0
- 50....50R0
- 100..1000
- 150..1500
- 1K...1001
- 10K..1002
- 100K.1003
- 470K.4703
- 1M....1004

### DERATING CURVE:



Parameter	Min.	Typ.	Max.	Units
Frequency Range	DC		4	GHz
Input Return Loss	14			dB
Resistance		+/-5%		Ohms
Input Power			10	Watts
Mounting Surface Temperature			100	°C

Barry Industries reserves the right to change part number and or process without notification.

Barry Industries, Inc., 60 Walton St., Attleboro, MA 02703 T: 508-226-3350 F: 508-226-3317 E-mail: sales@barryind.com

Barry Industries maintains an ISO 9001 Certified Quality Management System

Origination Date	Revision Date	Rev.
10/29/03	04/11/08	C