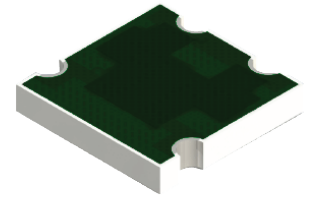


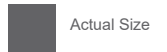
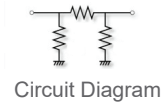
ATC2525CT-1000JN-94 Features:

- PI Configuration
- RoHS Compliant
- Solderable Terminals
- Customer Defined Testing Available
- Symmetrical Design¹
- Tape & Reel or Waffle Pack Available (Standard is bulk)



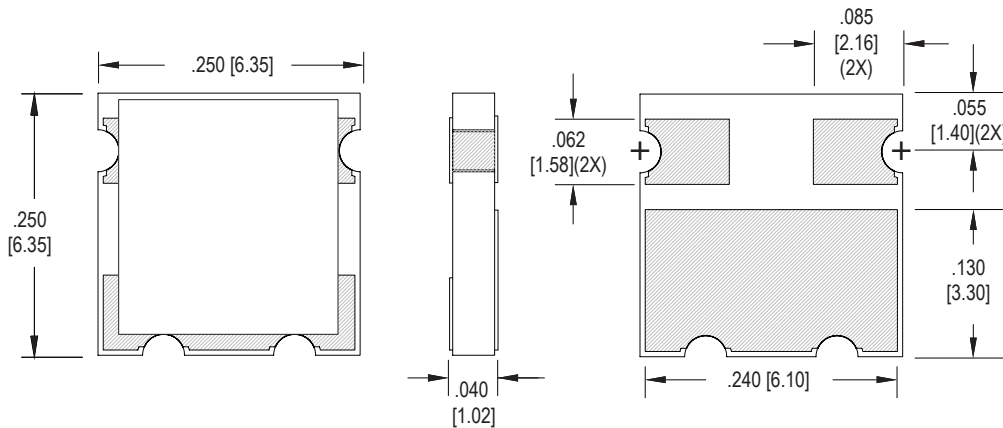
ATC2525CT-1000JN-94 Parameters:

| | |
|---------------------------------------------------------------------------------------------|-------------------------|
| Nominal Attenuation: | 10dB |
| Operating Frequency: | DC - 2GHz* |
| Attenuation Accuracy: | 9.6dB min., 10.8dB max. |
| Rated Power: | 5.5W** |
| Return Loss*: | 18dB min. |
| Impedance: | 50Ω |
| Construction: | Thick Film on Alumina |
| Operating Temperature: | -55 to +150°C |
| Baseplate to resistor film thermal resistance: 27.2°C/Watt with 250°C max. film temperature | |

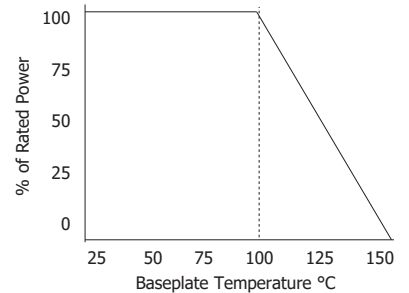


¹ Can be mounted in either direction
 * PCB dielectric constant/thickness (mm), 12/mm, contact factory for other situations
 ** Rating based on ≤100°C constant baseplate temperature, for other situations use thermal resistance

ATC2525CT-1000JN-94 Dimensions:



ATC2525CT-1000JN-94 Power Derating Curve



Dimensions in inches [mm]
 Tolerance is ± 0.005 [0.13]
 unless otherwise stated

Ordering Information:

| | | | | | | | | |
|-----------------------------------------------------------|------|------|----------|---------------------------|-------------------------------------------------------------|----------|----------------------------------|---------------------------------------------------------------------|
| ATC | 2525 | CT | - | 1000 | JN | - | 94 | UU |
| Prefix for 3 Sided Wraparound Attenuator w/ Castellations | | | | Value Code 1000 - 10dB | Normal Inspection Contact factory for additional options | | Substrate 94 - 0.040" Alumina | Packaging Blank - Bulk TR - Tape and Reel WP - Waffle Pack |
| Size 2525 | | | | | | | | |
| Terminal Metallization | | RoHS | Magnetic | Solder | Epoxy | Wirebond | | |
| CT - 100% Matte Tin over Nickel over Silver | | Yes | Yes | Yes | No | No | | |

Barry Industries reserves the right to change part number and/or process without notification.

ATC2525CT-1000JN-94 Reliability Specifications:

| Parameter: | Test Condition: | Results: |
|--------------------------------|-------------------------------------------------------------------------------------------|------------------------------------------------------------------------|
| Short Time Overload | Apply 1.1x Rated Power for 5 Seconds. | ≤ 5.0% Resistance Shift |
| Rated Load Life | Apply 1/2 Power Under 40°C ±2°C 90 Minutes on/ 30 Minutes off. Repeat for 100 hours | ≤ 5.0% Resistance Shift |
| Moisture Resistance | MIL-PRF-55342 para 4.8.9 95% RH, 25°C - 65°C | ≤ 5.0% Resistance Shift |
| Resistance to Soldering Heat | MIL-STD-202 Method 210 and MIL-PRF-55342 Para 4.8.8.1 | ≤ 5.0% Resistance Shift |
| Resistance to Bonding Exposure | MIL-PRF-55342 Para 4.8.8.2 | ≤ 5.0% Resistance Shift |
| Solderability | MIL-PRF-55342 Para 4.8.12 | >95% Covered |
| High Temperature Storage | 125°C ±2°C for 500 Hours | 1.) ≤ 5.0% Resistance Shift 2.) No Significant Abnormality (Visual) |
| Thermal Shock | -65°C to +150°C 30 Minutes Dwell, 5 Cycles | 1.) ≤ 5.0% Resistance Shift 2.) No Significant Abnormality (Visual) |

Barry Industries reserves the right to change part number and/or process without notification.